

Getting Ahead



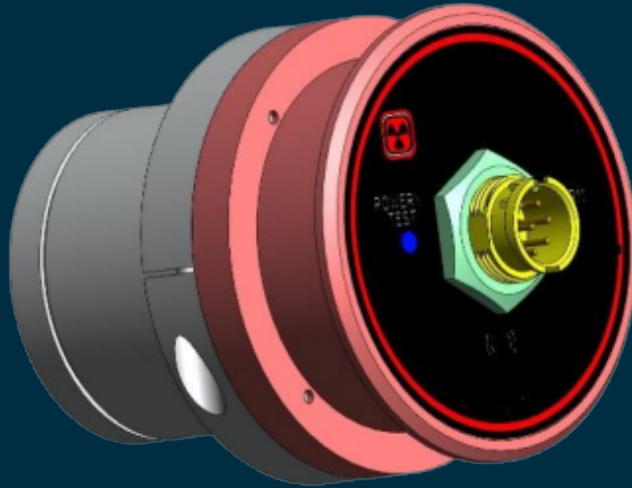
Civil, Military, Police and
First Responder Solutions



ID Force
International

SET PRORAD-50S

HAND-HELD COMBINED METAL AND GAMMA RADIATION DETECTOR

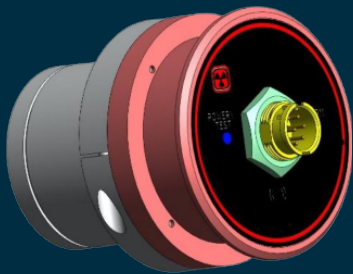


Set ProRad-50S (two sensors) provides detection of radioactive and nuclear materials by their gamma radiation, generates amplitude distribution data of registered signals and gives an alarm signal if monitored parameters go beyond established threshold values.

The device meets requirements of IEC 62244-2006 (ANSI 42.34) and provides possibility of detecting special radiation sources in category IIIP_y.

Advantages of working with the device:

- high speed and accuracy of detection and localization of radioactive and nuclear materials;
- shockproof housing;
- ability to work in a wide range of ambient temperatures;
- low power consumption;
- possibility of full-fledged operation in any magnetic fields without special modifications;
- automatic calibration;
- **contains no radioactive elements and sources of ionizing radiation.**
- can be used both indoors and outdoors.



Technical Specifications	
Modes of operation	Amplitude analysis of gamma radiation, search mode
Detector	Scintillator NaI (Tl)
Energy Rate	from 0.015 to 3.0 MeVl)
Sensitivity	1200 cps / μ SV / h (\propto Cs-137)
Speed of travel through the detection block	from 0.1 to 1.5 m/sec.
Operating time of the device when the threshold level is exceeded (with a background radiation of no more than 0.25 μ Sv / h), no more than	2 sec
Relative measurement error, no more than	10%
Terms of Use: <ul style="list-style-type: none"> • ambient temperature range; • relative humidity; • atmospheric pressure 	from -20 to +55°C; up to 98% when 35°C; from 84 to 106.7 kPa
Ingress Protection	IP65
Power Consumption	50mW

Easy to Integrate

ProRad-50S set structurally consists of two detecting units located on opposite sides of the monitored portal. Small dimensions of detecting units make it easy to integrate the complex into any access control system, turnstile or pedestrian opening. The maximum dimensions of the portal width are 1.5 m.

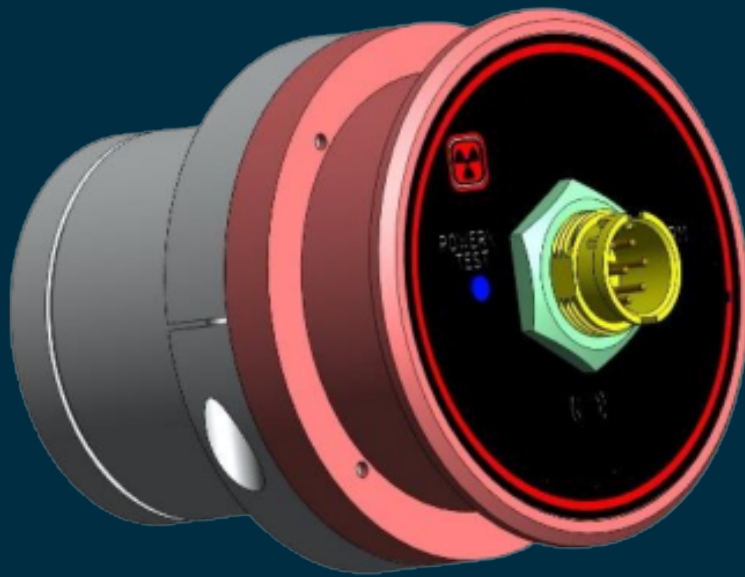
Image below shows the possible installation locations of the detection units, for example, for a walk through metal detector with the height of at least 2.1 m.



ProRad-50S set can be also integrated into a baggage scanner or similar systems to provide simultaneous visual control and the ability to detect radioactive materials in baggage.



Get in Touch



Contact info@idforce.io



ID Force International Pty Ltd
Suite 705, 11 Railway Street
Chatswood NSW 2067 Sydney,
Australia